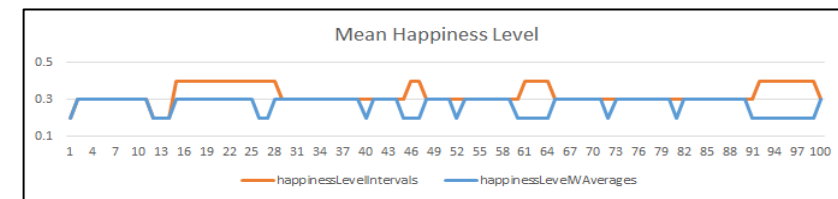
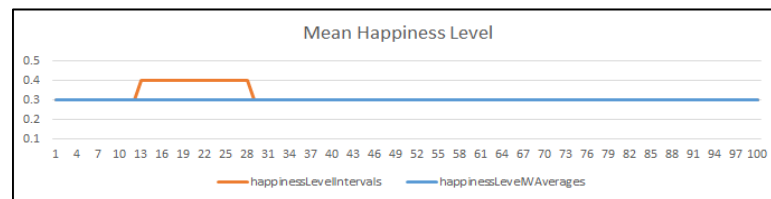
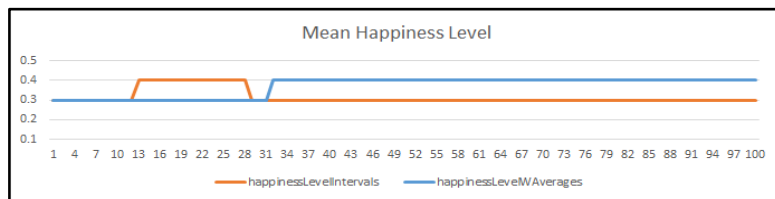
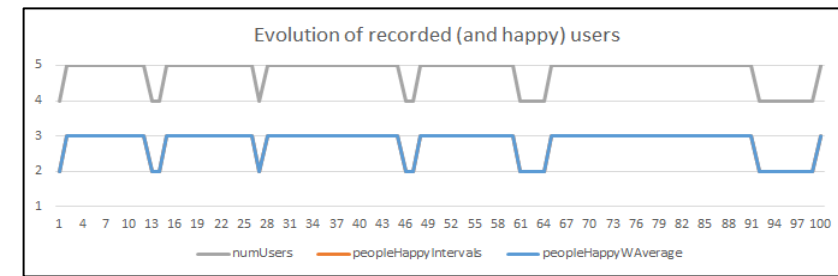
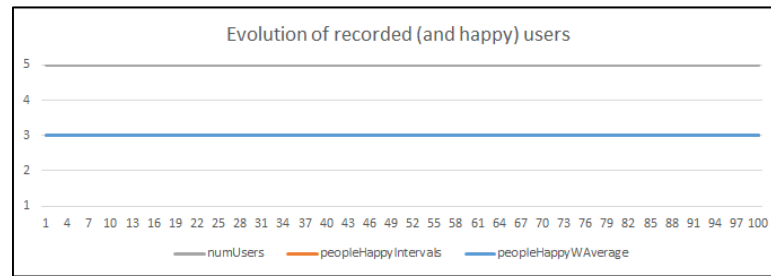
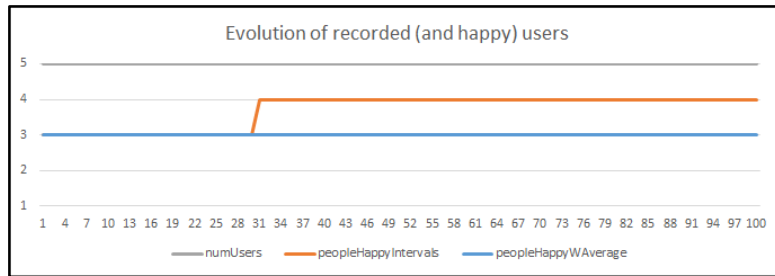
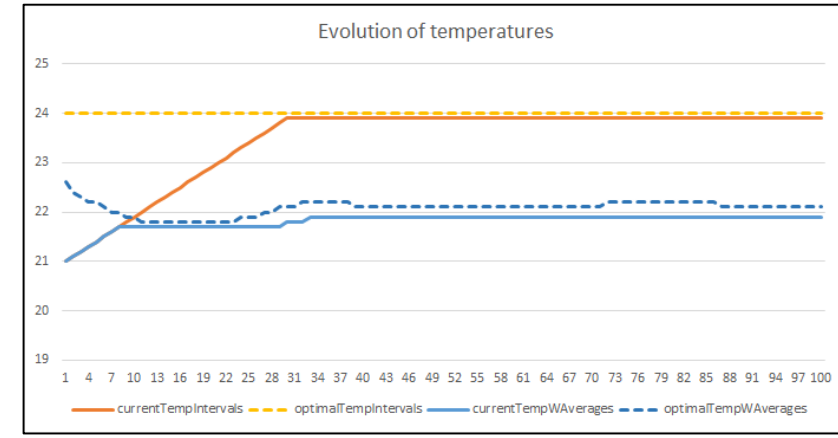
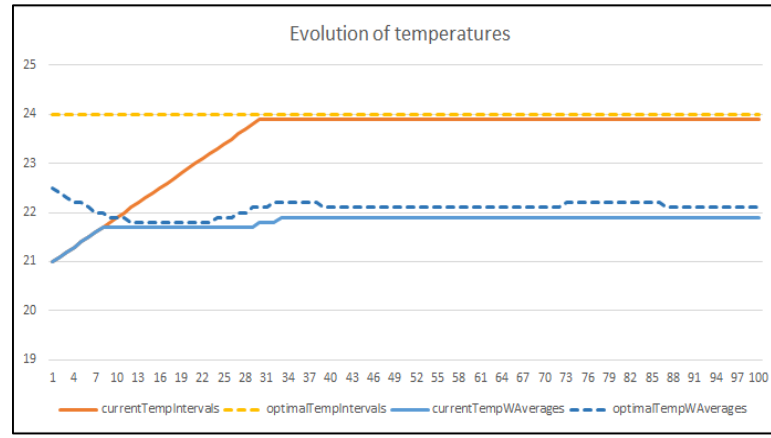
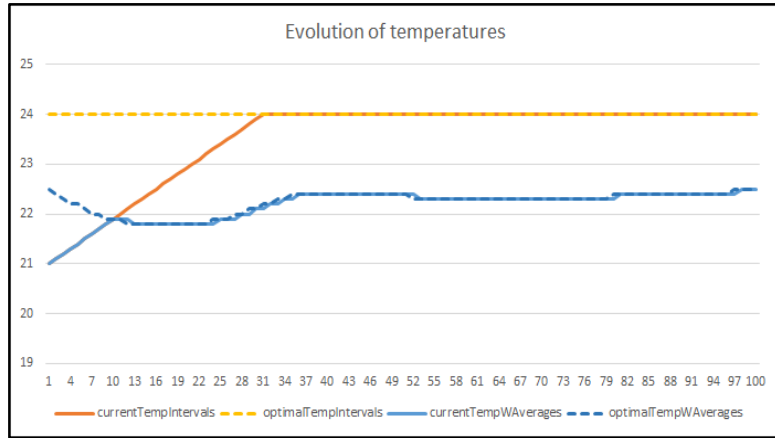


Scenario 1 (AV)

Five users, all inside the room at all times. 2 still users, 1 approaching the AC, 1 leaving it, one moving up and down. Sensible temperatures.

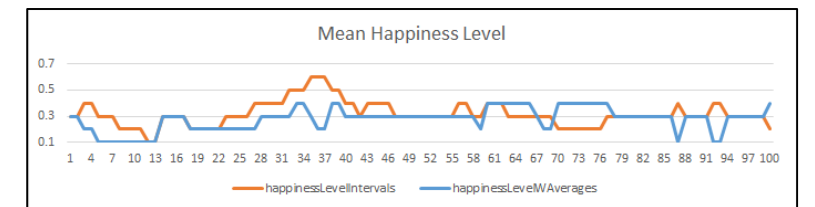
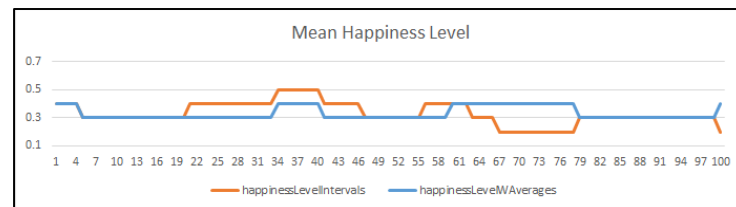
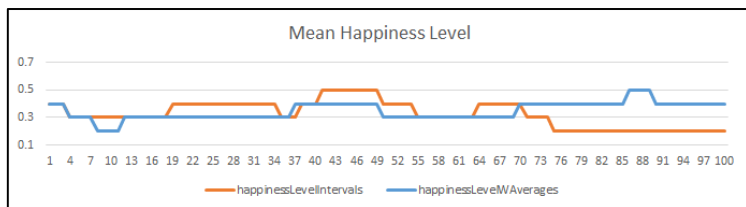
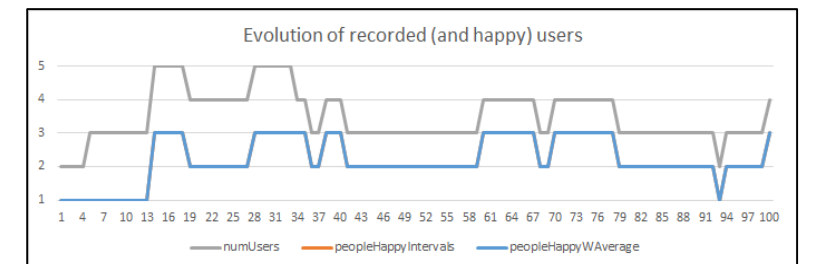
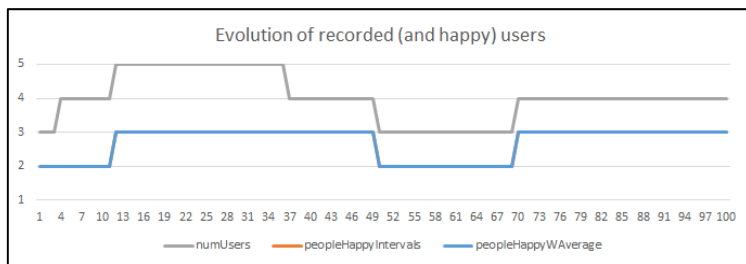
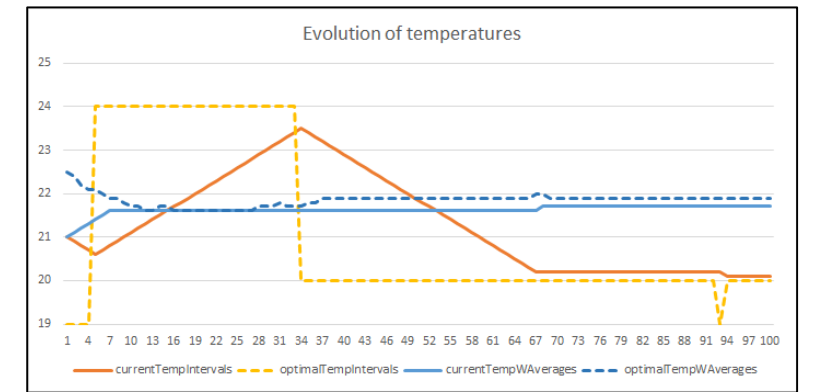
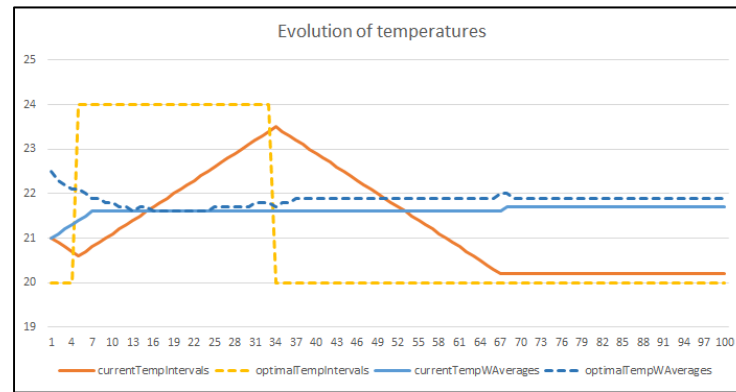
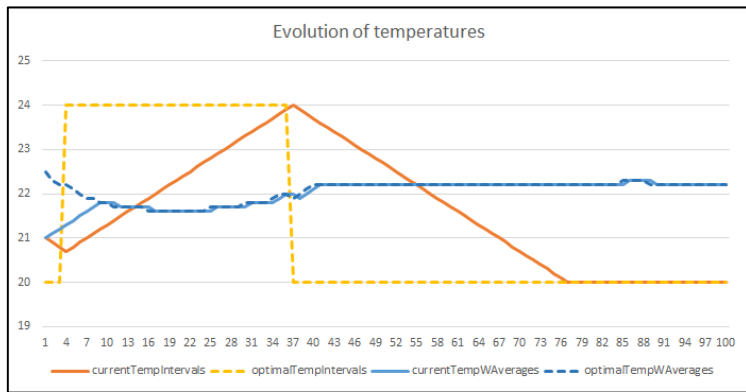
	InitialDistanceToAC	finalDistanceToAC	Pace	Movement	minComfortTemp	maxComfortTemp	ReliableConnection
User1	3.5	3.5	0.0	still	19.0	21.9	0.99
User2	12.0	3.0	0.25	oneway	22.0	25.0	0.99
User3	4.0	12.0	0.25	oneway	24.0	27.0	0.99
User4	10.0	10.0	0.0	still	20.0	24.0	0.33
User5	12.0	4.0	0.25	nonstop	22.0	26.0	0.99



Scenario 2 (AV2)

Five users, only 3 of them inside the room at all times. 2 still users, 1 approaching the AC starting from outside the room, 1 leaving the room, one moving up and down, continuously entering and leaving the room. Sensible temperatures.

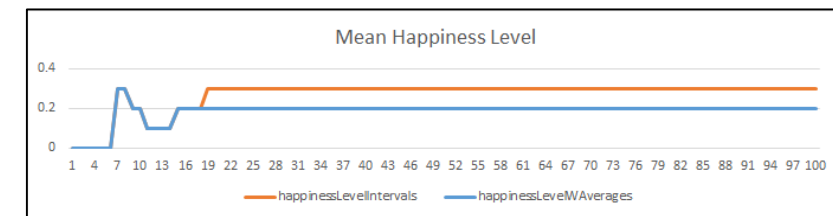
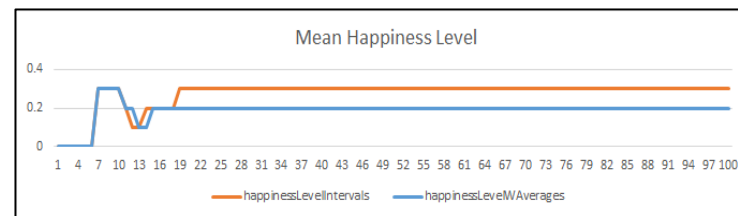
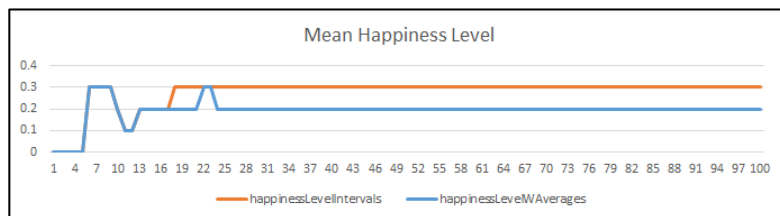
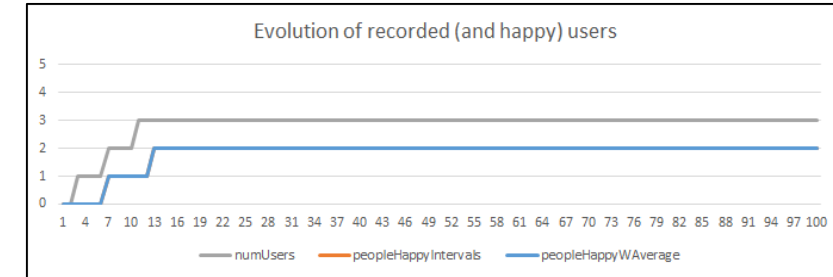
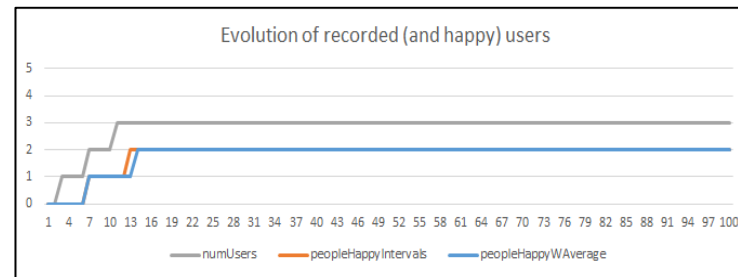
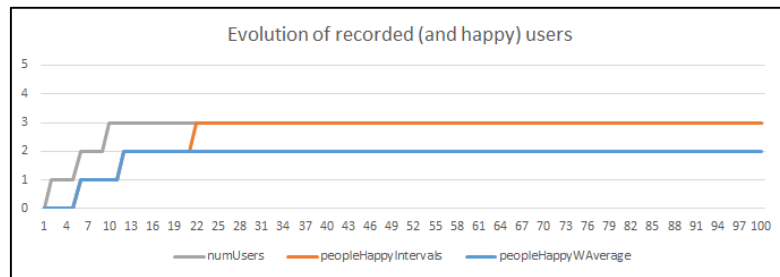
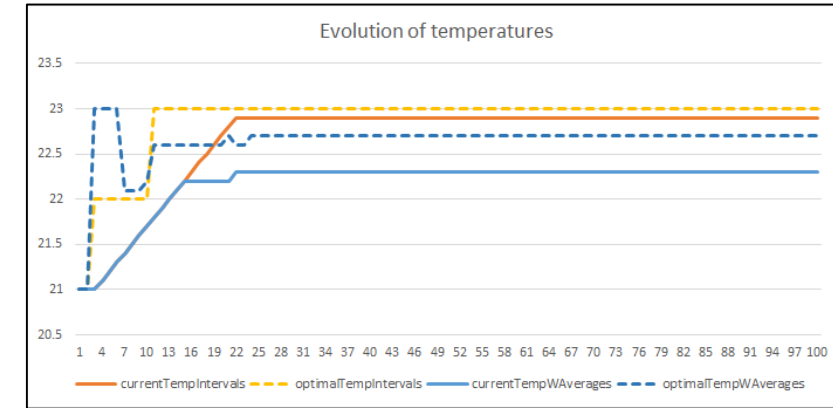
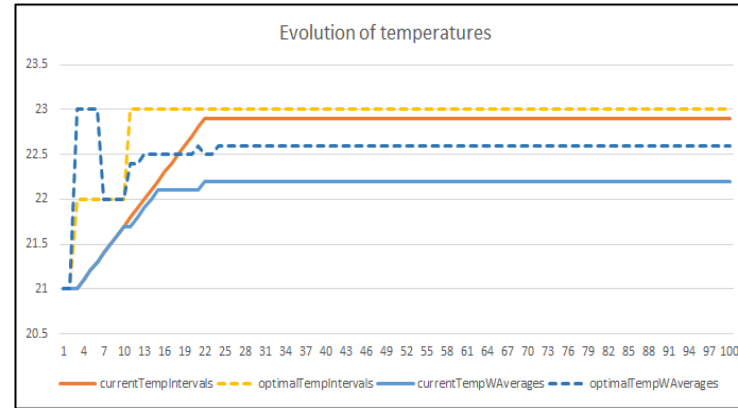
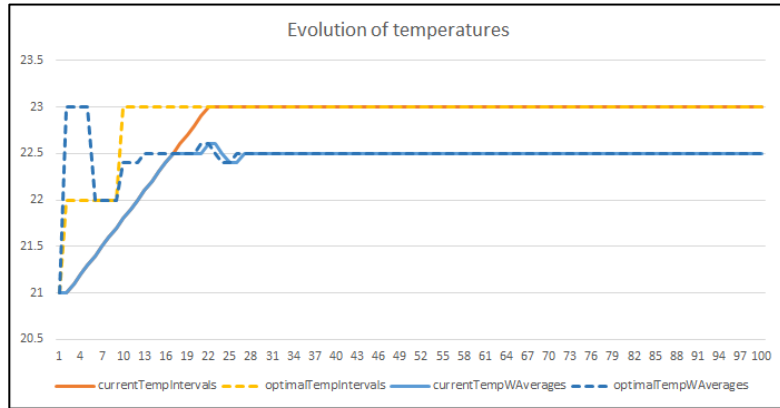
	InitialDistanceToAC	finalDistanceToAC	Pace	Movement	minComfortTemp	maxComfortTemp	ReliableConnection
User1	3.5	3.5	0.0	still	19.0	21.9	0.99
User2	13.0	3.0	0.25	oneway	22.0	25.0	0.99
User3	4.0	15.0	0.25	oneway	24.0	27.0	0.99
User4	10.0	10.0	0.0	still	20.0	24.0	0.33
User5	15.0	8.0	0.25	nonstop	22.0	26.0	0.99



Scenario 3 (simple)

Three users, starting from outside the room. They all enter, sit and remain still. Sensible temperatures.

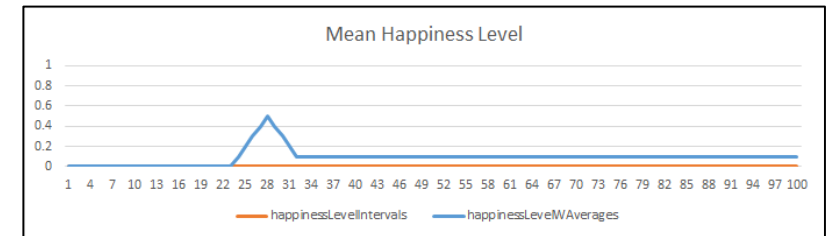
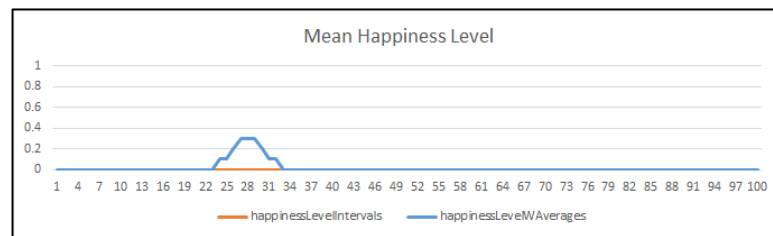
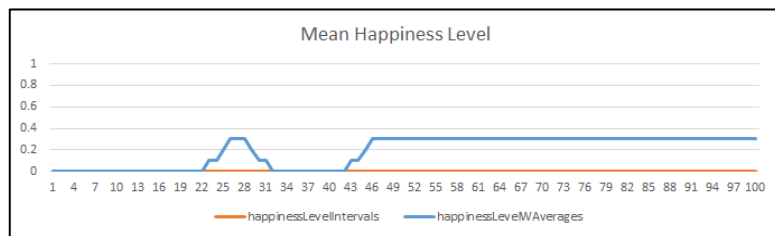
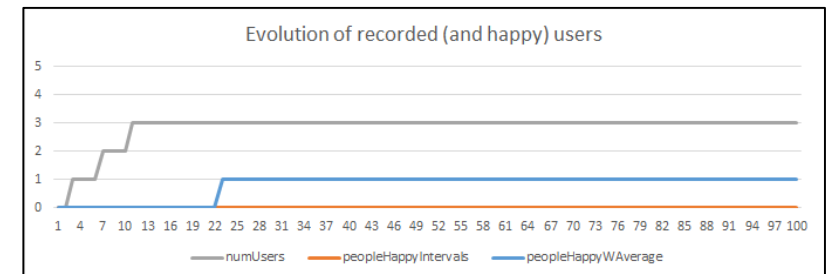
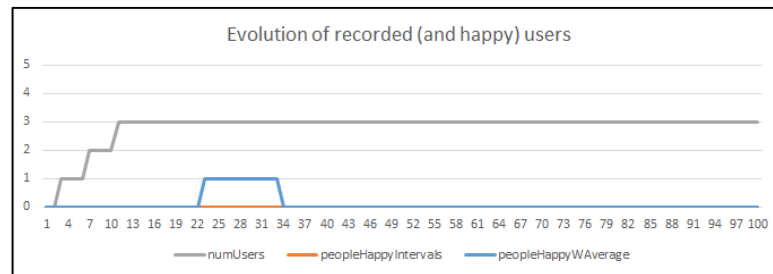
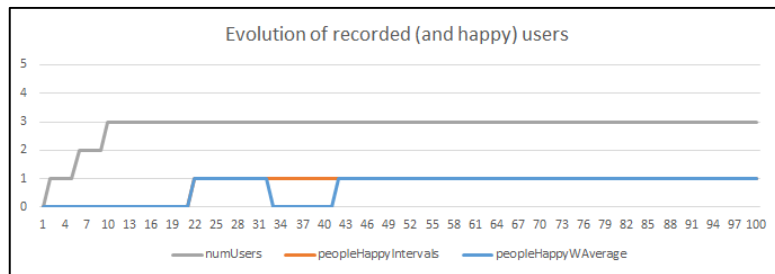
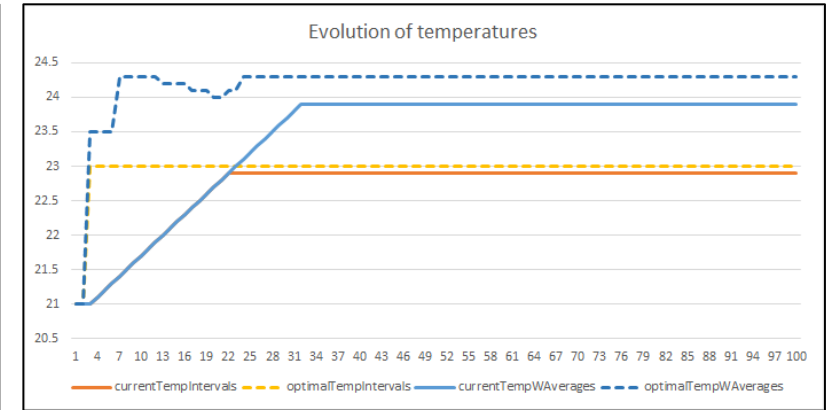
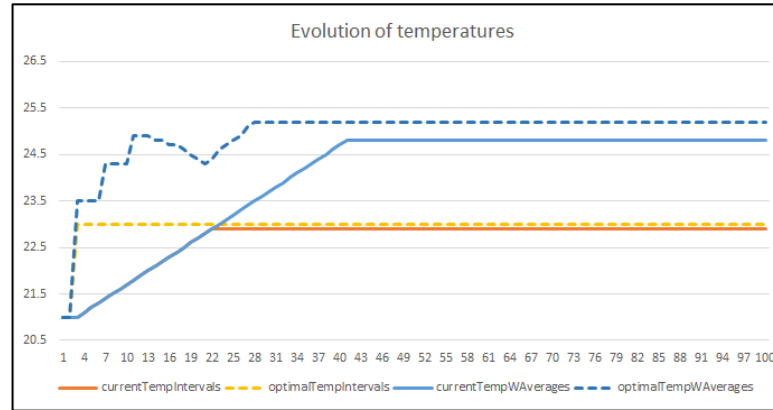
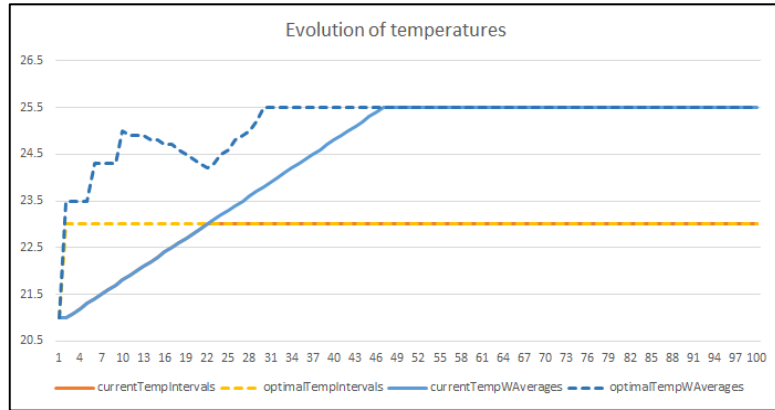
	InitialDistanceToAC	finalDistanceToAC	Pace	Movement	minComfortTemp	maxComfortTemp	ReliableConnection
User1	13.0	2.0	0.5	oneway	22.0	24.0	0.99
User2	15.0	3.0	0.5	oneway	18.0	23.0	0.99
User3	17.0	4.0	0.5	oneway	23.0	25.0	0.99



Scenario 4 (noOverlap-OLD)

Three users, starting from outside the room. They all enter, sit and remain still. Their comfort ranges do not overlap. User3 comfort range is an outlier.

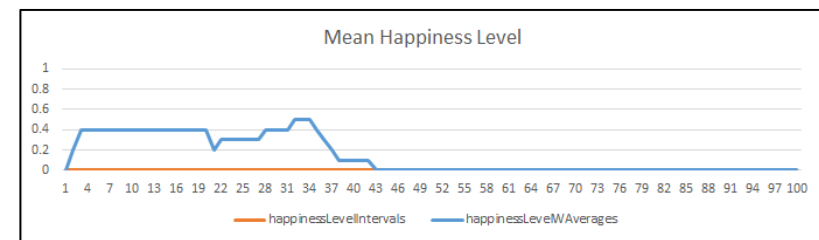
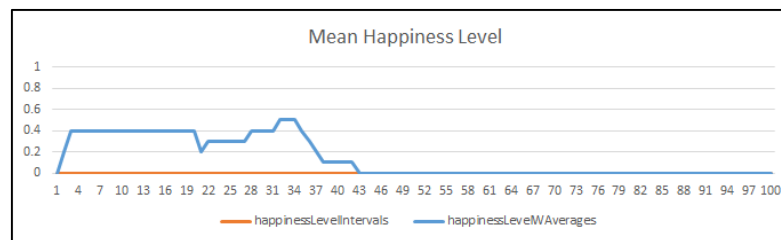
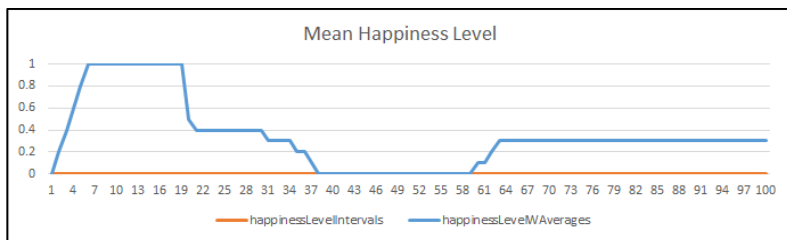
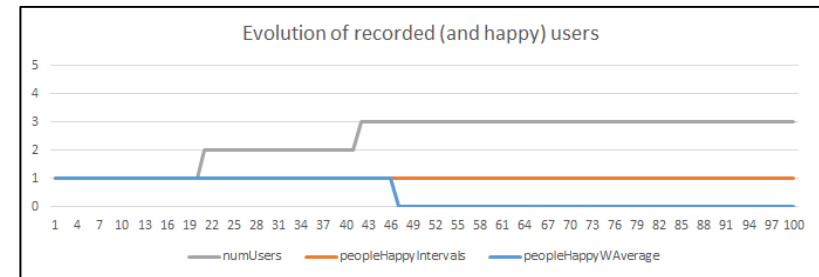
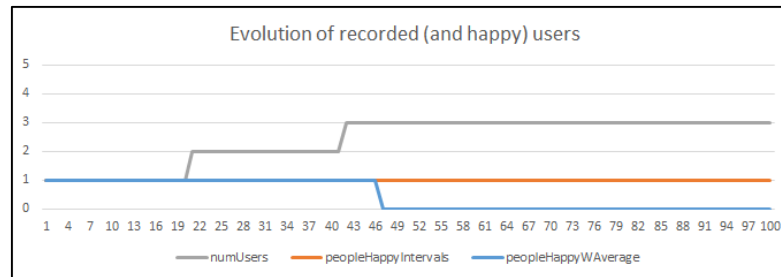
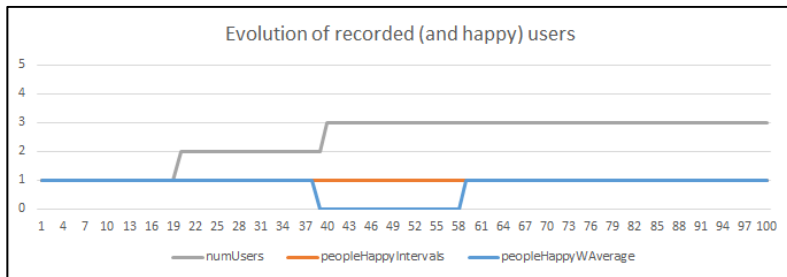
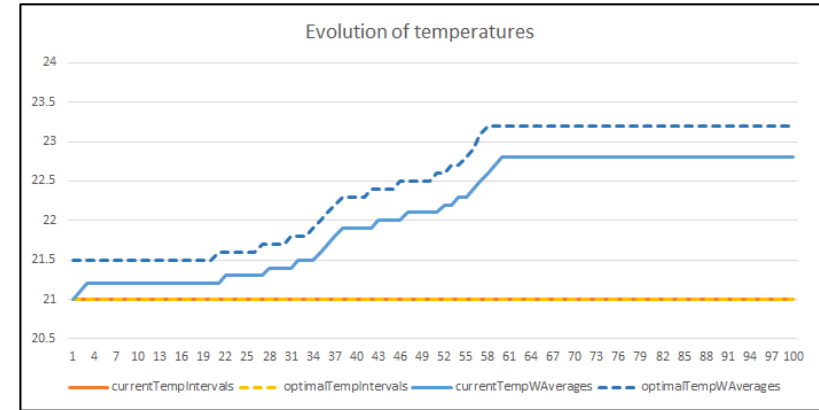
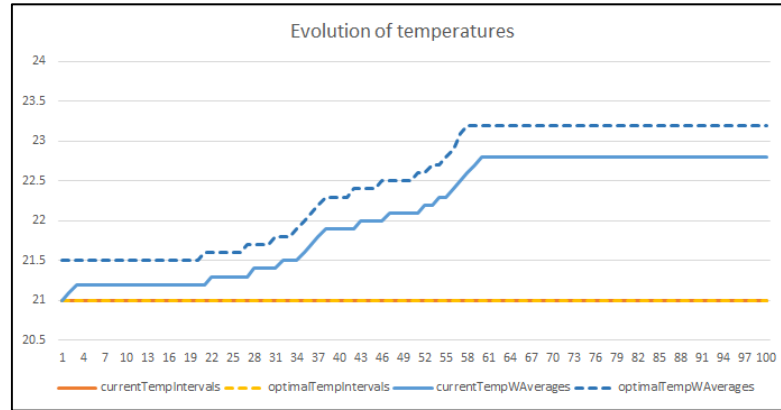
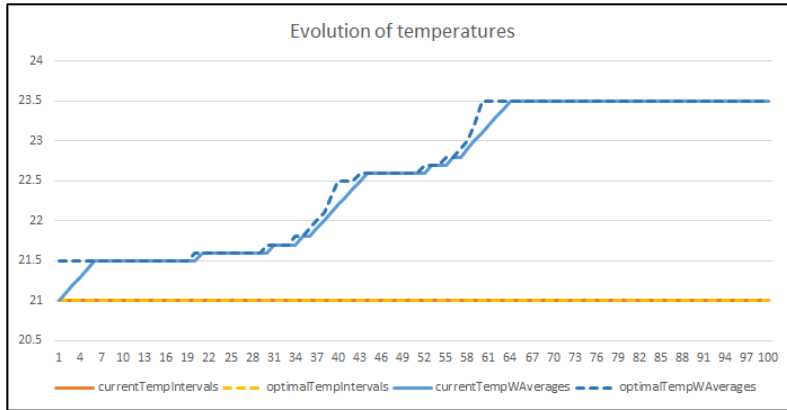
	InitialDistanceToAC	finalDistanceToAC	Pace	Movement	minComfortTemp	maxComfortTemp	ReliableConnection
User1	13.0	2.0	0.5	oneway	23.0	24.0	0.99
User2	15.0	2.0	0.5	oneway	25.0	26.0	0.99
User3	17.0	2.0	0.5	oneway	27.0	28.0	0.99



Scenario 4 (noOverlap - NUEVO)

Three users, two of them starting from outside the room. They all enter, sit and remain still. Their comfort ranges do not overlap.

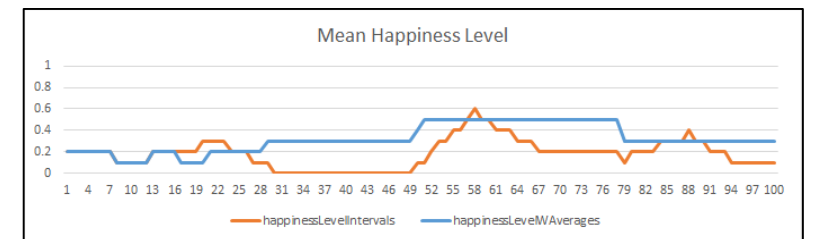
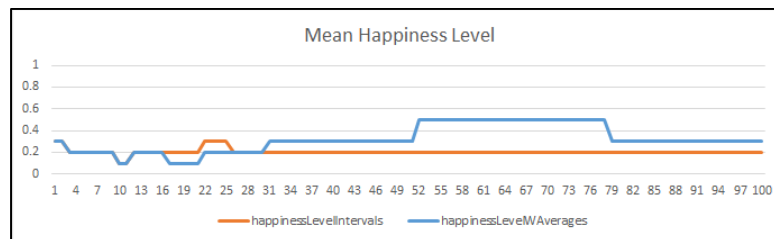
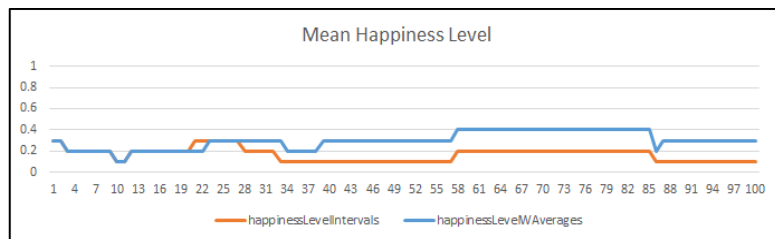
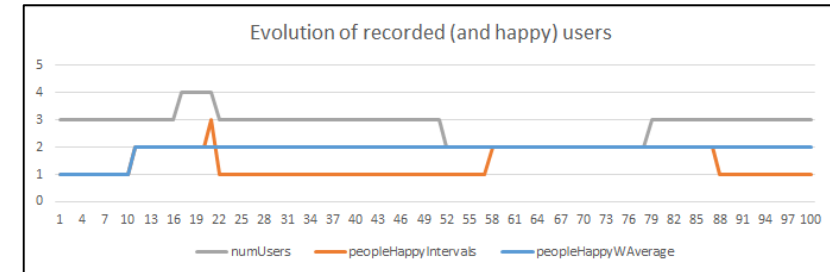
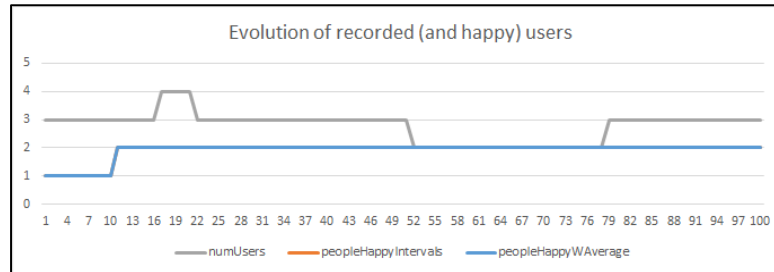
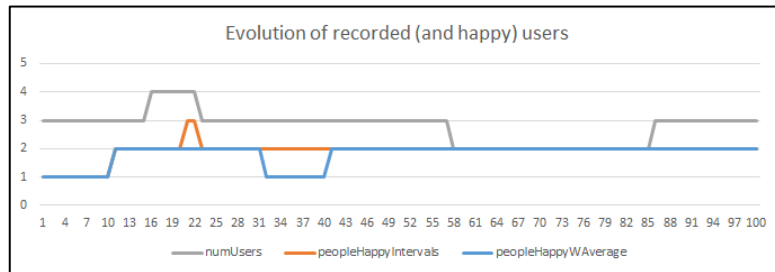
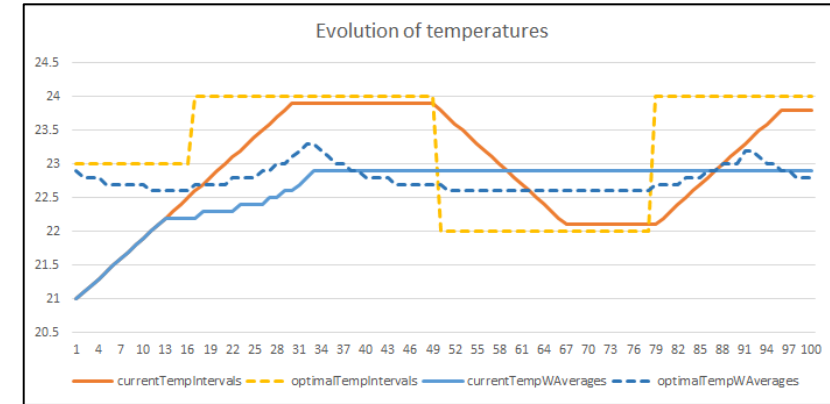
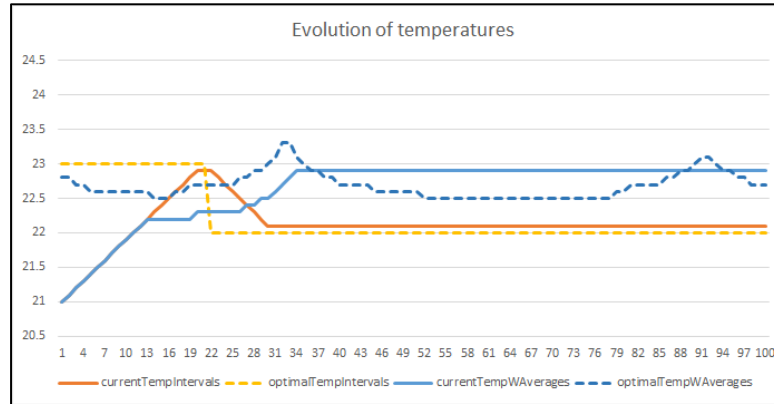
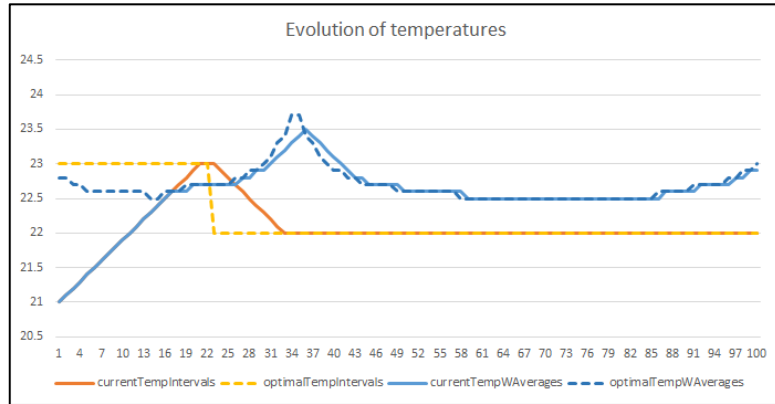
	InitialDistanceToAC	finalDistanceToAC	Pace	Movement	minComfortTemp	maxComfortTemp	ReliableConnection
User1	12.0	2.0	0.5	oneway	21.0	22.0	0.99
User2	22.0	2.0	0.5	oneway	23.0	24.0	0.99
User3	32.0	2.0	0.5	oneway	25.0	26.0	0.99



Scenario 5 (entran_salen)

Four users, 2 remain still, 1 leaving the room, 1 moving in and out. Not all users declare sensible temperature ranges.

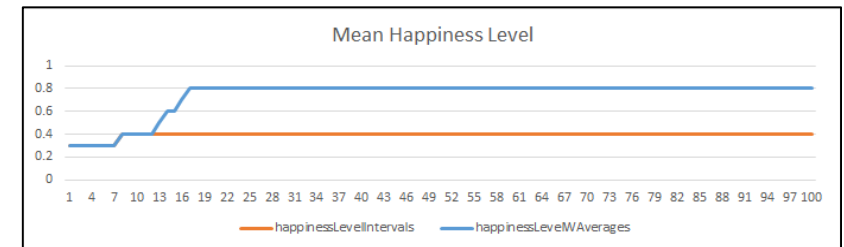
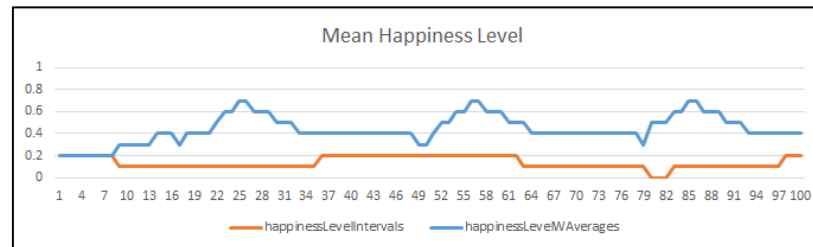
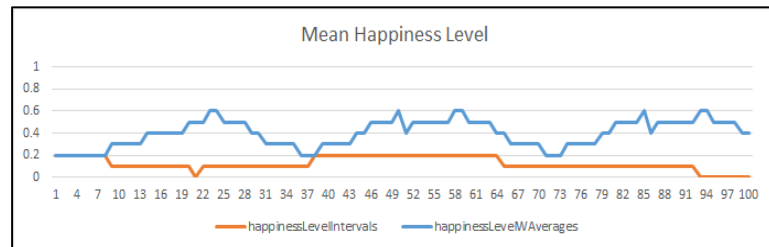
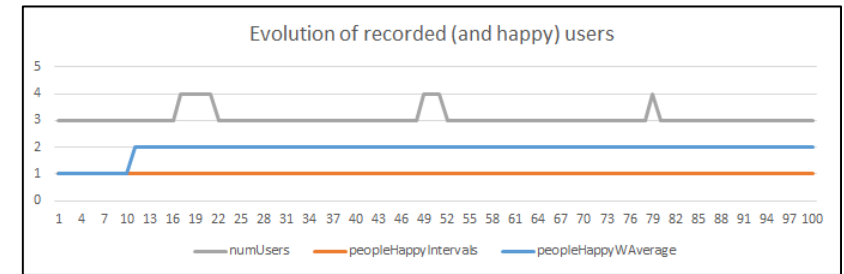
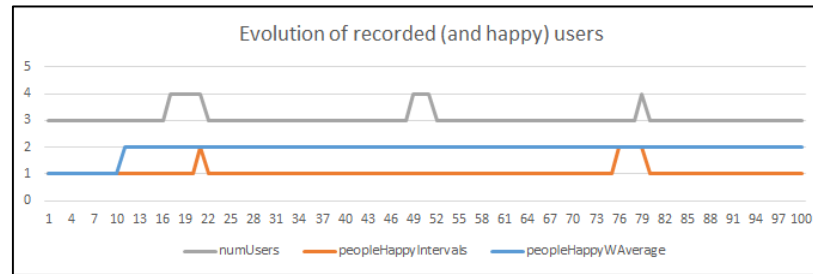
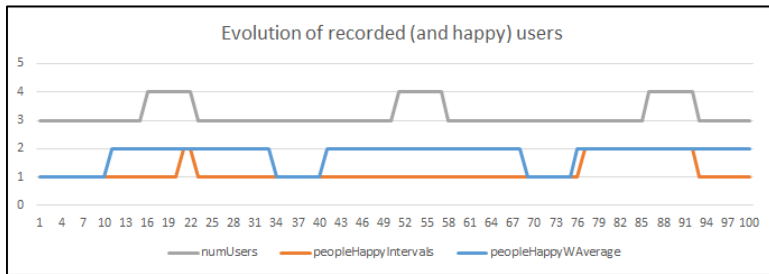
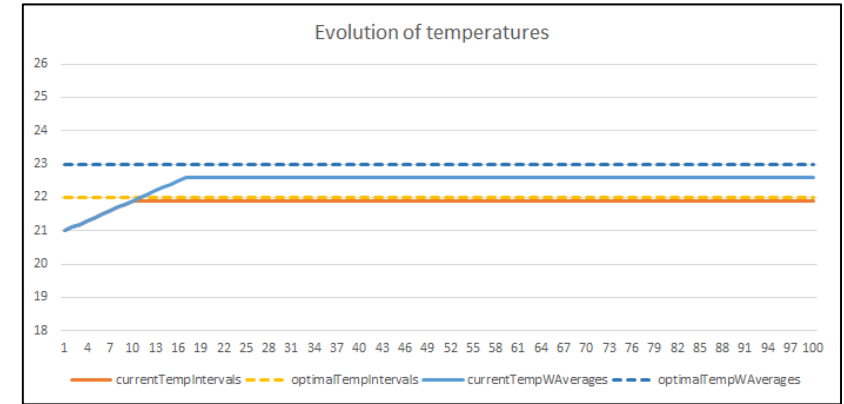
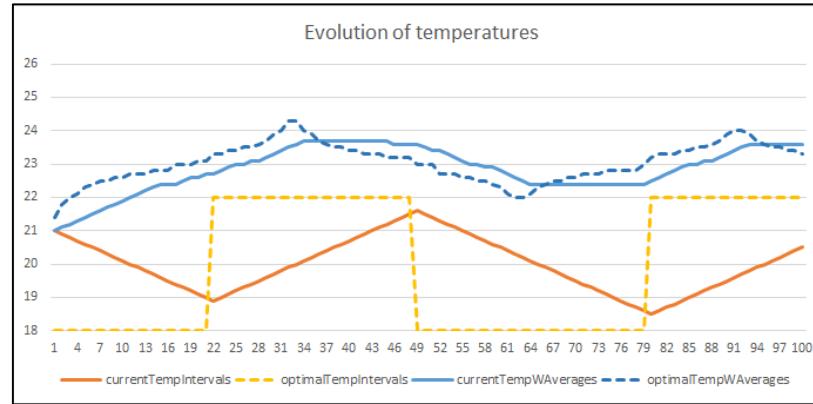
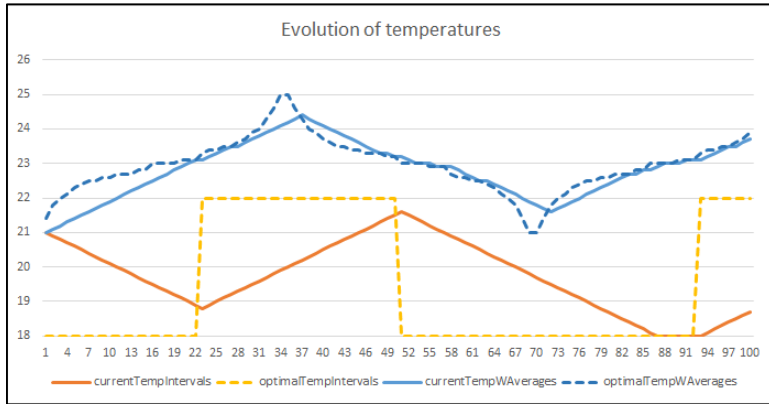
	InitialDistanceToAC	finalDistanceToAC	Pace	Movement	minComfortTemp	maxComfortTemp	ReliableConnection
User1	2.0	2.0	0.0	still	22.0	24.0	0.99
User2	4.0	4.0	0.0	still	18.0	23.0	0.99
User3	3.0	24.0	0.5	oneway	23.0	25.0	0.99
User4	20.0	3.0	0.5	nonstop	24.0	30.0	0.99



Scenario 6 (extreme_nonstop)

Four users. 2 remain still, 2 keep moving in and out.
User4 comfort zone outside sensible range.

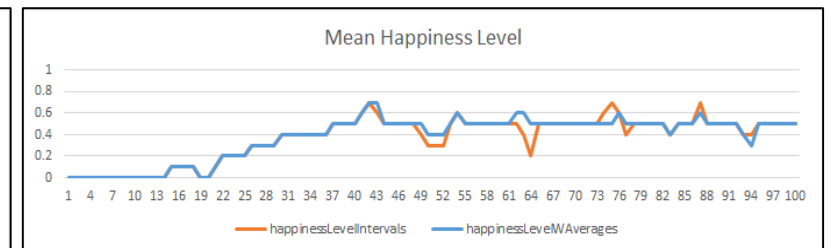
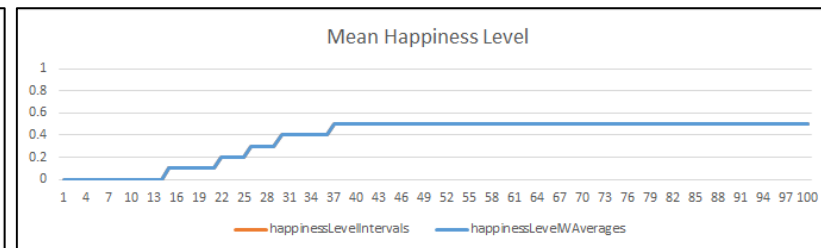
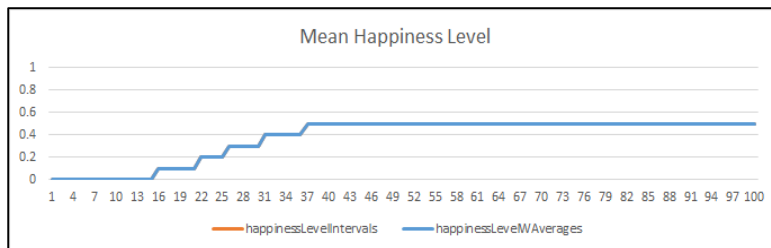
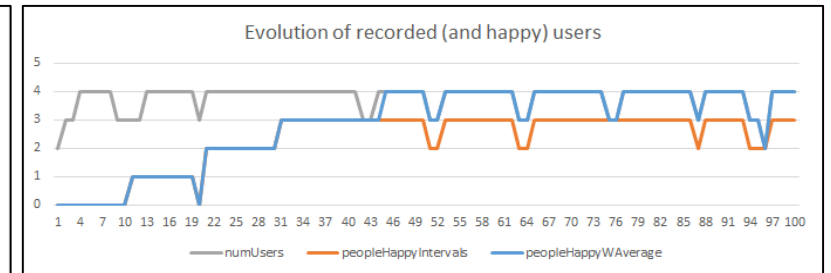
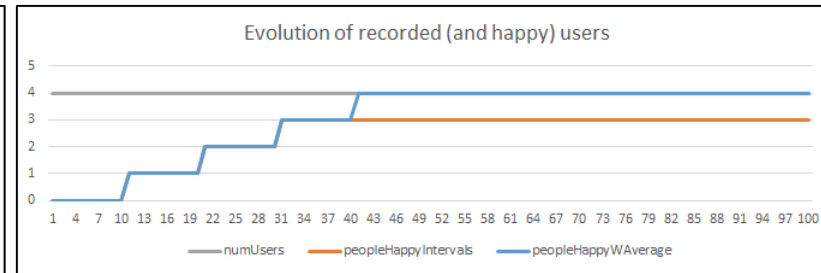
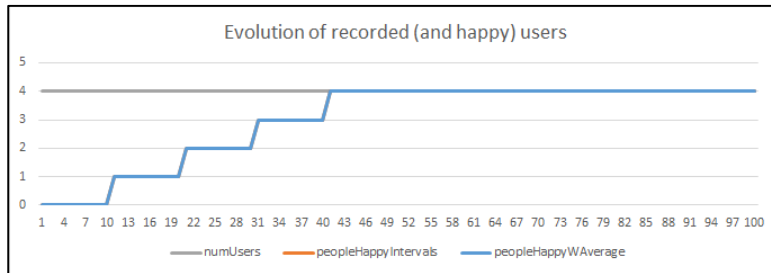
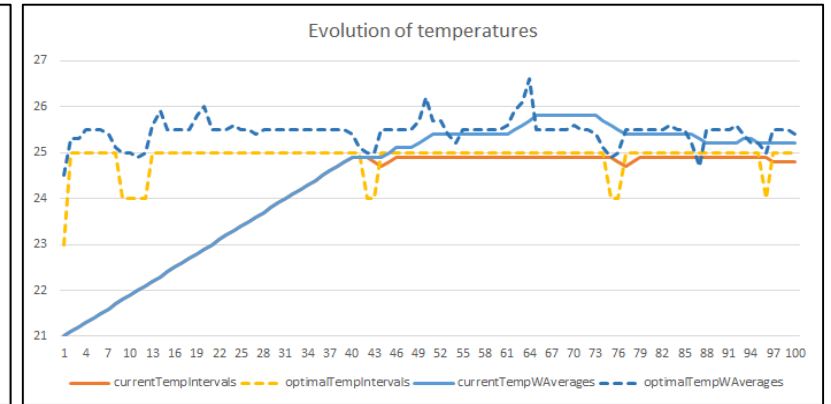
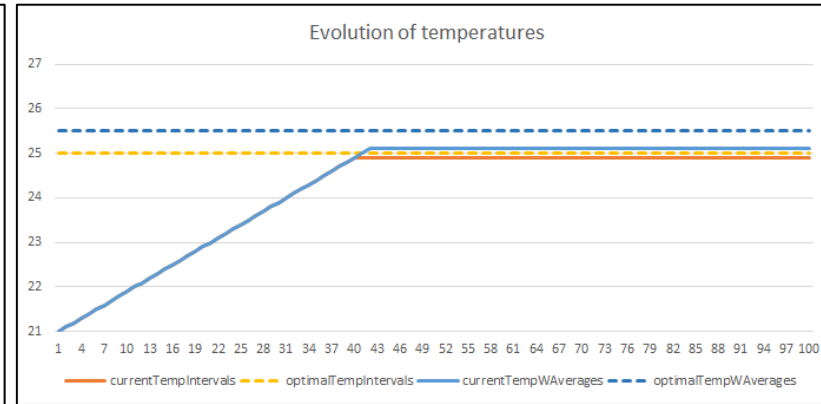
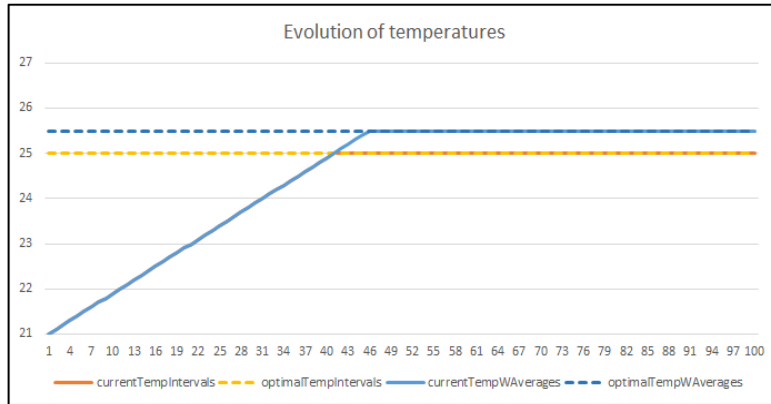
	InitialDistanceToAC	finalDistanceToAC	Pace	Movement	minComfortTemp	maxComfortTemp	ReliableConnection
User1	2.0	2.0	0.0	still	22.0	24.0	0.99
User2	4.0	4.0	0.0	still	18.0	28.0	0.99
User3	3.0	20.0	0.5	nonstop	12.0	19.0	0.99
User4	20.0	3.0	0.5	nonstop	27.0	34.0	0.99



Scenario 7 (stable)

Four users, all inside the room and still, with unreliable connections. Two comfort zone ranges slightly outside the limits.

	InitialDistanceToAC	finalDistanceToAC	Pace	Movement	minComfortTemp	maxComfortTemp	ReliableConnection
User1	2.0	2.0	0.0	still	22.0	26.0	0.5
User2	2.0	2.0	0.0	still	23.0	27.0	0.5
User3	2.0	2.0	0.0	still	24.0	28.00	0.5
User4	2.0	2.0	0.0	still	25.0	29.0	0.5



Scenario 8 (mess)

Eight users, all moving at different paces. Includes all possibilities regarding people going in and out of the room, reliable devices and sensible comfort ranges (User1's gone bananas).

	InitialDistanceToAC	finalDistanceToAC	Pace	Movement	minComfortTemp	maxComfortTemp	ReliableConnection
User1	1.0	15.0	0.2	nonstop	32.0	36.0	0.5
User2	20.0	10.0	0.5	nonstop	18.0	22.0	0.5
User3	15.0	9.0	0.2	nonstop	24.0	28.0	0.5
User4	4.0	10.0	0.5	nonstop	16.0	20.0	0.5
User5	1.0	12.0	0.5	nonstop	23.0	25.0	0.7
User6	14.0	10.0	0.1	nonstop	17.0	27.0	0.8
User7	15.0	9.0	0.5	nonstop	12.0	14.0	0.9
User8	4.0	10.0	0.5	nonstop	20.0	22.0	0.9

